



## Thaw and Culture Details

Cell Line Name	UCSD014i-21-3
WiCell Lot Number	WB55344
Provider	University of California, San Diego – Dr. Kelly Frazer
Banked By	WiCell
Thaw and Culture Recommendations	WiCell recommends thawing 1 vial into 3 wells of a 6 well plate.
Culture Platform	Feeder Independent
	Medium: mTeSR™1
	Matrix: Matrigel®
Protocol	WiCell Feeder Independent mTeSR™1 Protocol
Passage Number	p20 These cells were cultured for 19 passages prior to freeze and post reprogramming. WiCell adds +1 to the passage number to best represent the overall passage number of the cells at thaw.
Date Vialied	15-December-2016
Vial Label	UCSD014i-21-3 p20 WB55344
Biosafety and Use Information	Appropriate biosafety precautions should be followed when working with these cells. The end user is responsible for ensuring that the cells are handled and stored in an appropriate manner. WiCell is not responsible for damages or injuries that may result from the use of these cells. Cells distributed by WiCell are intended for research purposes only and are not intended for use in humans.

## Testing Performed by WiCell

Test Description	Test Provider	Test Method	Test Specification	Result
Karyotype by G-banding	WiCell	SOP-CH-003	Expected karyotype	Pass
Post-Thaw Viable Cell Recovery	WiCell	SOP-CH-305	≥ 15 Undifferentiated Colonies, ≤ 30% Differentiation and recoverable attachment after passage	Pass
Identity by STR	UW Translational Research Initiatives in Pathology Laboratory	PowerPlex 16 HS System by Promega	Defines profile	Pass
Sterility	Steris	ST/07	Negative	Pass
Mycoplasma	WiCell	SOP-QU-004	Negative	Pass

## Testing Reported by Provider

The Provider stated that some or all of the additional analyses listed below may have been performed for this cell line. For more information, publication and dbGaP links, where available, are provided on the cell line specific web page on the WiCell website.

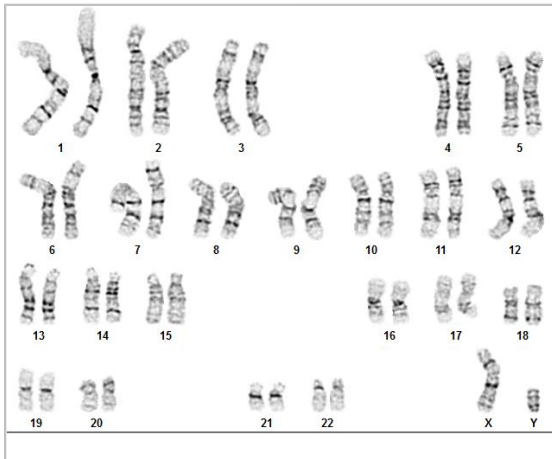
- Illumina® HumanCoreExome BeadChip Array
- RNA-Seq
- Flow Cytometry (SSEA-4, Tra 1-81)
- Infinium® Expanded Multi-Ethnic Genotyping Array (MEGA<sup>EX</sup>)



Approval Date	Quality Assurance Approval
04-January-2017	<p style="text-align: right;">1/22/2018</p> <p>X JKG JKG Quality Assurance Signed by: Gay, Jenna</p>

**Date Reported:** Friday, January 12, 2018  
**Cell Line:** UCSD014i-21-3-WB55344 13226  
**Passage#:** 20  
**Date of Sample:** 1/8/2018  
**Specimen:** Human iPSC  
**Results:** 46,XY

**Cell Line Gender:** Male  
**Reason for Testing:** lot release testing  
**Investigator:** [REDACTED], WiCell CDM



**Cell:** 20  
**Slide:** G03  
**Slide Type:** Karyotype

**Total Counted:** 20  
**Total Analyzed:** 8  
**Total Karyogrammed:** 4  
**Band Resolution:** 425 - 525

### Interpretation:

**This is a normal karyotype. No clonal abnormalities were detected at the stated band level of resolution.**

**Completed by:** [REDACTED], CG(ASCP)  
**Reviewed and Interpreted by:** [REDACTED], PhD, FACMG  
**A signed copy of this report is available upon request.**

**Date:** \_\_\_\_\_ **Sent By:** \_\_\_\_\_ **Sent To:** \_\_\_\_\_ **QC Review By:** \_\_\_\_\_

*Limitations: This assay allows for microscopic visualization of numerical and structural chromosome abnormalities. The size of structural abnormality that can be detected is >3-10Mb, dependent upon the G-band resolution obtained from this specimen. For the purposes of this report, band level is defined as the number of G-bands per haploid genome. It is documented here as "band level", i.e., the range of bands determined from the four karyograms in this assay. Detection of heterogeneity of clonal cell populations in this specimen (i.e., mosaicism) is limited by the number of metaphase cells examined, documented here as "# of cells counted".*

*This assay was conducted solely for listed investigator/institution. The results may not be relied upon by any other party without the prior written consent of the Director of the WiCell Cytogenetics Laboratory. The results of this assay are for research use only. If the results of this assay are to be used for any other purpose, contact the Director of the WiCell Cytogenetics Laboratory.*

*Unless otherwise mutually agreed in writing, the services provided to you hereunder by WiCell Research Institute, Inc. ("WiCell") are governed solely by WiCell's Terms and Conditions of Service, found at [www.wicell.org/privacyandterms](http://www.wicell.org/privacyandterms). Any terms you may attach to a purchase order or other document that are inconsistent, add to, or conflict with WiCell's Terms and Conditions of Service are null and void and of no legal force or effect.*

**Sample Report:**

13226-STR

**Sample Name on Tube:** 13226-STR

71.5 ng/μL, (A260/280=1.94)

**Sample Type:** Cells**Cell Count:** ~2 million cells**Requestor:**

WiCell Research Institute

Quality Department

**Sample Date:** N/A**Receive Date:** 01/16/18**Assay Date:** 01/17/18**File Name:** STR 180118 wmr**Report Date:** 01/19/18

STR Locus	STR Genotype Repeat #	STR Genotype
FGA	16-18,18.2,19,19.2,20,20.2,21,21.2,22, 22.2, 23, 23.2, 24, 24.2, 25, 25.2, 26-30, 31.2, 43.2, 44.2,45.2, 46.2	Identifying information has been redacted to protect donor confidentiality. If more information is required, please, contact <a href="#">WiCell's Technical Support</a> .
TPOX	6-13	
D8S1179	7-18	
vWA	10-22	
Amelogenin	X,Y	
Penta_D	2.2, 3.2, 5, 7-17	
CSF1PO	6-15	
D16S539	5, 8-15	
D7S820	6-14	
D13S317	7-15	
D5S818	7-16	
Penta_E	5-24	
D18S51	8-10, 10.2, 11-13, 13.2, 14-27	
D21S11	24,24.2,25,25.2,26-28,28.2,29,29.2, 30, 30.2,31, 31.2,32,32.2,33,33.2, 34,34.2,35,35.2,36-38	
TH01	4-9,9.3,10-11,13.3	
D3S1358	12-20	

**Results:** Based on the 13226-STR cells submitted by WiCell QA dated and received on 01/16/18, this sample (Label on Tube: 13226-STR) defines the STR profile of the human stem cell line UCSD014i-21-3 comprising 26 allelic polymorphisms across the 15 STR loci analyzed.

**Interpretation:** No STR polymorphisms other than those corresponding to the human UCSD014i-21-3 stem cell line were detected and the concentration of DNA required to achieve an acceptable STR genotype (signal/noise) was equivalent to that required for the standard procedure (~1 ng/amplification reaction) from human genomic DNA. This result suggests that the 13226-STR sample submitted corresponds to the UCSD014i-21-3 stem cell line and was not contaminated with any other human stem cells or a significant amount of mouse feeder layer cells.

**Sensitivity:** Sensitivity limits for detection of STR polymorphisms unique to either this or other human stem cell lines is ~2-5%.



Digitally Signed on 01/22/18

[Redacted], BA  
TRIP Laboratory, Molecular

Digitally Signed on 01/22/18

[Redacted], PhD, Director / Co-Director  
UWHC Molecular Diagnostics Laboratory / UWSPH TRIP Laboratory

Testing was accomplished by analysis of human genetic polymorphisms at STR loci. This methodology has not yet been approved by the FDA and is for investigational use only.

Acknowledge TRIP in your publications, posters & presentations. For details, see: <http://www.pathology.wisc.edu/research/trip/acknowledging>

TRIP agrees to maintain the confidentiality of any information provided to it in connection with its performance of this STR analysis on the same conditions as set forth in paragraph 2 of WiCell's Terms and Conditions of Service (<http://www.wicell.org/media.acux/1a429b84-2b54-44a4-8ad8-5c05db93dd8a>).

# Native Product Sterility Report



## CORRECTED REPORT

WiCell  
504 S Rosa Rd., RM 101  
Madison, WI 53719

SAMPLE #: 17120390  
DATE RECEIVED: 07-Dec-17  
TEST INITIATED: 11-Dec-17  
TEST COMPLETED: 26-Dec-17

SAMPLE NAME / DESCRIPTION: UCSD125i-7-2 WB66673 13110  
UCSD174i-18-2 WB66672 13111  
UCSD177i-17-2 WB66671 13112  
WISC011i-inGFPpuro WB66670 13113  
UCSD008i-44-1 WB66287 13114  
UCSD006i-21-1 WB57101 13116  
UCSD007i-21-2 WB54928 13117  
UCSD013i-16-3 WB61874 13118  
UCSD014i-21-3 WB55344 13119  
UCSD022i-8-3 WB59011 13120  
UCSD023i-8-4 WB58972 13121  
UCSD024i-13-3 WB58691 13122  
UCSD025i-13-4 WB63445 13123  
UCSD026i-9-1 WB54736 13124  
UCSD028i-9-3 WB54172 13125  
UCSD029i-9-4 WB63527 13126  
UCSD030i-23-2 WB58975 13127  
UCSD031i-45-1 WB58276 13128  
UCSD032i-41-1 WB64803 13129  
UCSD085i-6-2 WB61664 13139

UNIQUE IDENTIFIER: NA  
PRODUCT REGISTRATION: Human iPS Cells

TEST RESULTS:

# Tested	# Positives (Growth)	- Control
20	0	2 Negatives

TEST SUMMARY:

# Samples	Media Type	Volume (mL)	Incubation Temperature (° C)	Incubation Duration (Days)
20	TSB	40	20-25	14
20	FTG	40	30-35	14


REFERENCE: Processed according to LAB-003: Sterility Test Procedure  
METHOD VALIDATION / PD #: 000053

# Native Product Sterility Report



TEST METHODOLOGY: USP - Direct Transfer

COMMENTS: Report revised due to incorrect sample name/description.

REVIEWED BY 

DATE 02JAN18

Specific test results may not be indicative of the characteristics of any other samples from the same lot or similar lots. This test report shall not be reproduced, except in full, without prior written approval. Liability is limited to the costs of the tests.



# Mycoplasma Detection Assay Report

Testing Performed by WiCell

Lot Release Testing

January 12, 2018

FORM SOP-QU-004.01

Version G Edition 02

Reported by: KR

Reviewed by: JB

BD Monolight 180

#	Sample Name	Reading A		A Ave	Reading B		B Ave	Ratio B/A	Result	Comments/Suggestions
		RLU1	RLU2		RLU1	RLU2				
1	UCSD014i-21-3-WB55344 13226	204	210	207	81	85	83	0.40	Negative	
2	Positive (+) Control	340	347	343.5	17780	17867	17824	51.89	Positive	
3	Negative (-) Control	556	577	566.5	66	59	62.5	0.11	Negative	

